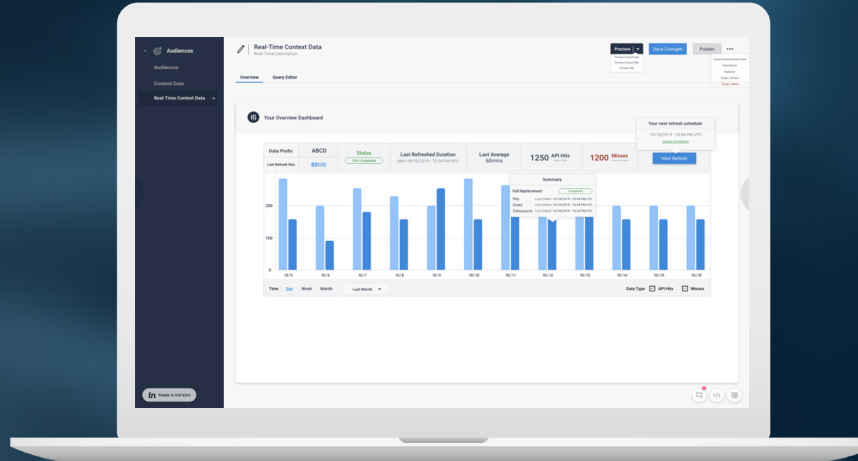




Engage

Personalize Messages in Real Time by **Unlocking Your Data**



Powering Real-Time Personalization at Scale

Brands can finally use their data when they most need it - when a recipient engages with a message. Now they can utilize data that was previously inaccessible when users engaged with communications.

Engage offers secure and scalable access to customer contextual data (or any other internal data) in an easily consumable format. This powers personalization in real time, allowing for a level of brand engagement and up-to-date content that other tools can't match.



Enable Open-Time Personalization



Join Disparate Data Sources



Personalize Application Content



Connect to as many internal data sources as you'd like



Drag-and-drop query builder or direct SQL



No limits on data size



Supports thousands of responses per second

Ready to get started? Visit MessageGears.com/Engage to see a demo and learn how you can get a free proof-of-concept.